

## locality information

**TYPE**

Available sites

**PLACE**

Havířov

**AREA AVAILABLE**

10 000 m<sup>2</sup>

**TECHNICAL INFRASTRUCTURE**

Electricity, water, natural gas, sewerage, telephone, central heat source

**1ST CLASS ROAD OR MOTORWAY WITHIN 10 KM**

Yes

**RAILWAYS WITHIN 10 KM**

Yes

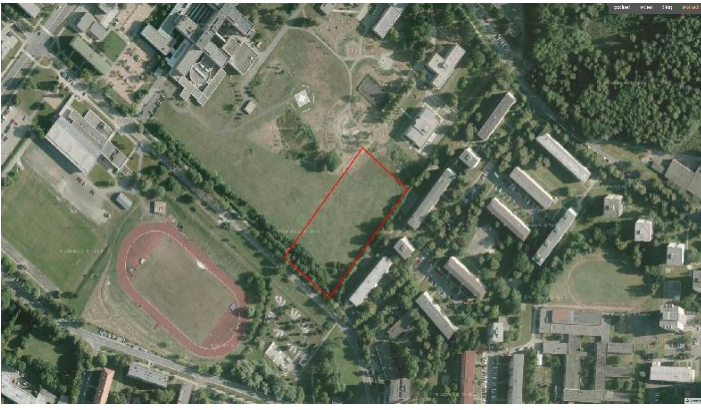
**AIRPORT WITHIN 50 KM**

Yes

**TYPE OF USE**

Civic amenities





## Brief description

Parcel no. 2230/8 on Astronautů St., zoned for civic amenities. The land is flat and situated next to the road. All technical/utilities networks can be connected. Up to 70% of the land can be built on.