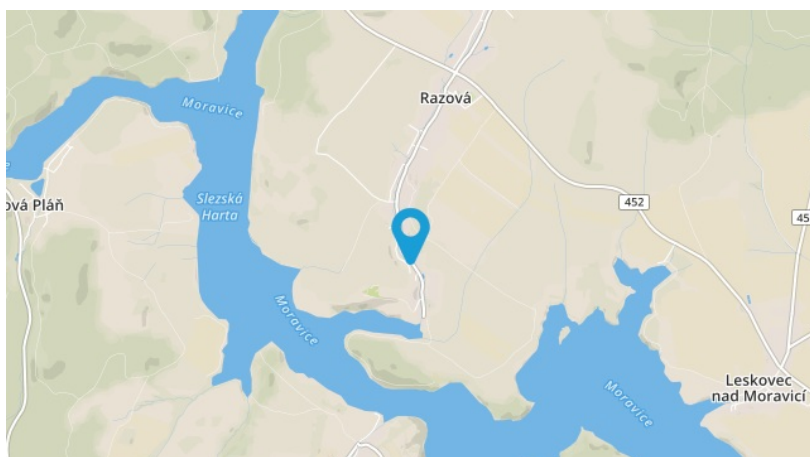
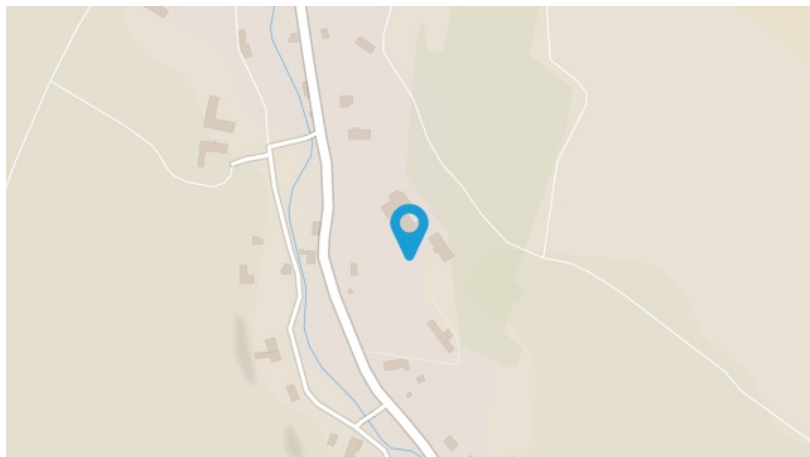


Hotelový a ubytovací areál Slezská Harta



locality information

TYPE

Brownfields

PLACE

Razová

AREA AVAILABLE

28 000 m²

PROPERTY

private

TYPE OF BROWNFIELD

complex

NUMBER OF OBJECTS

4

BUILT UP AREA

2500

CONTAMINATION

assumed contaminated by previous use

FORMER USE

civic amenities

NETWORKING

partial

1ST CLASS ROAD OR MOTORWAY WITHIN 10 KM

Yes

RAILWAYS WITHIN 10 KM

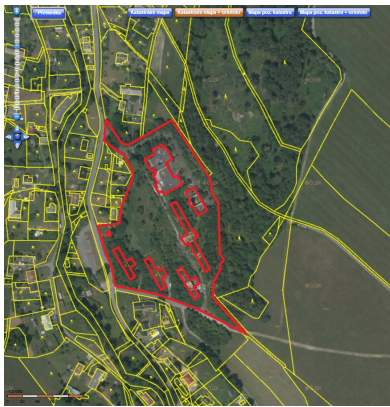
Yes

AIRPORT WITHIN 50 KM

No

TYPE OF USE

civic amenities – small / medium commercial facilities



Brief description

The complex was originally used as accommodation and catering facilities for employees of INGSTAV Opava when building the Slezská Harta dam.