

locality information

TYPE

Available sites

PLACE

Ostrava

AREA AVAILABLE

23 000 m²

TECHNICAL INFRASTRUCTURE

Electricity: 22 kV, up to 30MW Gas: 300 mm, 2000 m³/hour Water: DN 300 mm, 400 mm, 50 m³/hour Sewerage: 50 m³/hour Heating: heat supply pipe (Dalkia) Rainwater drainage: 3.8 m³/sec. Telecommunications network: Telefonica, GTS Novera

1ST CLASS ROAD OR MOTORWAY WITHIN 10 KM

No

RAILWAYS WITHIN 10 KM

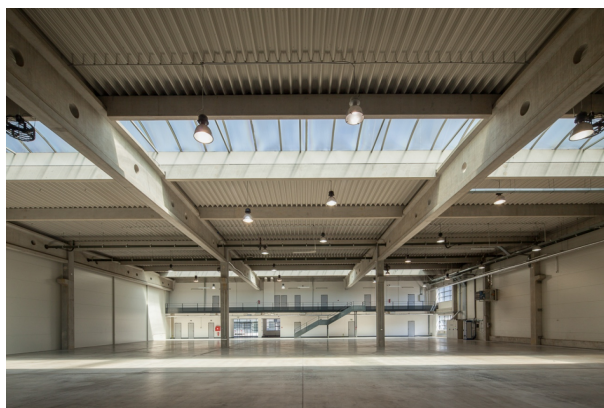
No

AIRPORT WITHIN 50 KM

No

TYPE OF USE

Light industry



Brief description

CTPark Ostrava is the largest industrial zone in Ostrava, with over 20 factory halls tailor-made to the specifications of production and logistics companies, but also suitable for companies with their own R&D. The zone also includes 2 office complexes. Its strategic location next to a motorway offers easy access. The zone includes 3 public transport (bus) stops, and the Leoš Janáček International Airport is just 15 km away.