

## locality information

### TYPE

Available sites

### PLACE

Havířov

### AREA AVAILABLE

10 000 m<sup>2</sup>

### TECHNICAL INFRASTRUCTURE

Electricity, water, natural gas, sewerage, telephone, central heat source

### 1ST CLASS ROAD OR MOTORWAY WITHIN 10 KM

Yes

### RAILWAYS WITHIN 10 KM

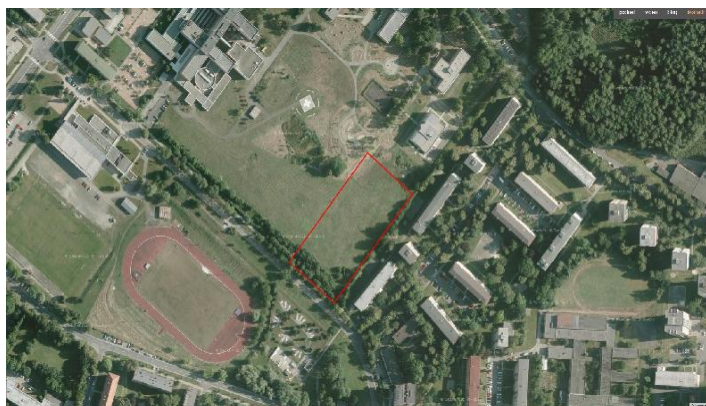
Yes

### AIRPORT WITHIN 50 KM

Yes

### TYPE OF USE

Civic amenities



## Brief description

Parcel no. 2230/8 on Astronautů St., zoned for civic amenities. The land is flat and situated next to the road. All technical/utilities networks can be connected. Up to 70% of the land can be built on.