

locality information

TYPE

Available sites

PLACE

Rýmařov

AREA AVAILABLE

3 300 m²

TECHNICAL INFRASTRUCTURE

Technical/utilities networks are at the site boundary.

1ST CLASS ROAD OR MOTORWAY WITHIN 10 KM

Yes

RAILWAYS WITHIN 10 KM

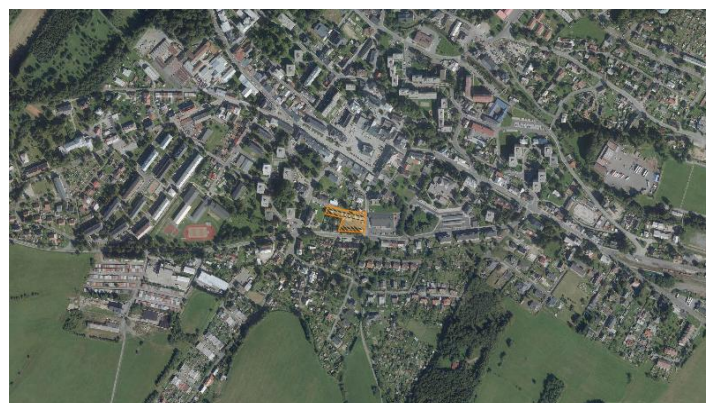
Yes

AIRPORT WITHIN 50 KM

No

TYPE OF USE

Site for commercial civic amenities



Brief description

A site close to the central part of the town, zoned for an expansion of civic amenities. The location comprises parcel nos. 115/1, 115/7 and 115/3 (cadastral area Rýmařov, municipality Rýmařov) and three rows of garages which would be demolished in the case of investors' interest. The location is close to a health centre with offices of general practitioners, specialist doctors and cosmetic services. On the other side of the location is the Lidl supermarket. The site is directly adjacent to road no. II/370.