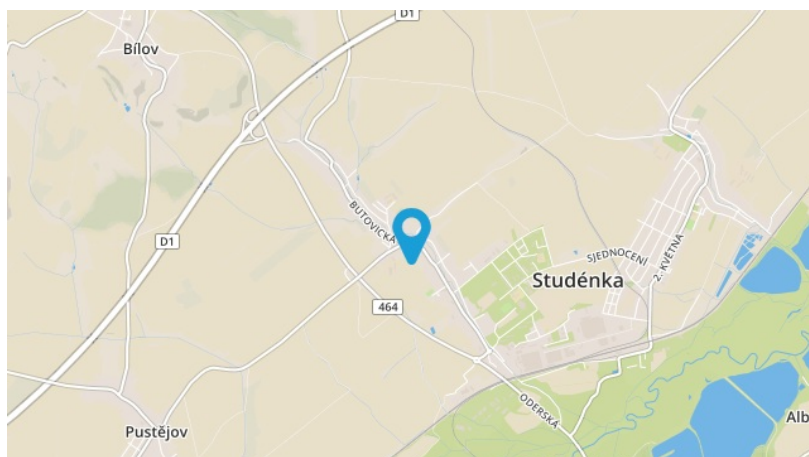
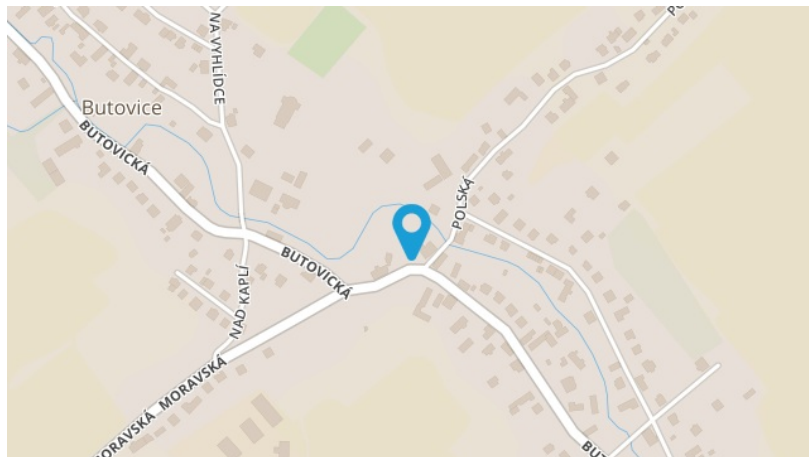


Rekultivovaná plocha po demolici obecního domu



locality information

TYPE

Available sites

PLACE

Studénka

AREA AVAILABLE

2 500 m²

TECHNICAL INFRASTRUCTURE

Public water mains, sewerage, electricity and gas are in the vicinity of the site.

1ST CLASS ROAD OR MOTORWAY WITHIN 10 KM

Yes

RAILWAYS WITHIN 10 KM

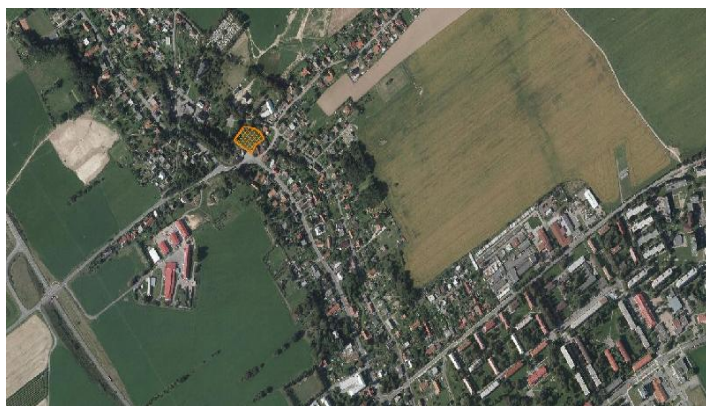
Yes

AIRPORT WITHIN 50 KM

Yes

TYPE OF USE

Site for civic amenities



Brief description

This site became vacant when a community centre was demolished in 2013. The use of the site is limited by the terms and conditions of the subsidy programme and the sustainability period: 5 years from its completion (2014).