

locality information

TYPE

Brownfields

PLACE

Bystřice

AREA AVAILABLE

12 300 m²

PROPERTY

private

TYPE OF BROWNFIELD

complex

NUMBER OF OBJECTS

3

BUILT UP AREA

870

CONTAMINATION

uncontaminated

FORMER USE

civic amenities

NETWORKING

partial

1ST CLASS ROAD OR MOTORWAY WITHIN 10 KM

Yes

RAILWAYS WITHIN 10 KM

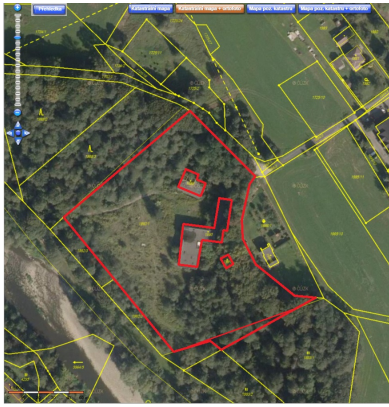
Yes

AIRPORT WITHIN 50 KM

No

TYPE OF USE

civic amenities



Brief description

Former children's camp next to the Olše River. The complex includes 3 large buildings which are derelict; no windows or doors, roofs collapsed. Ideally the entire complex should be demolished; it has been lying derelict for at least 20 years.