

locality information

TYPE

Offices

PLACE

Ostrava

AREA AVAILABLE

3 083 m²

TECHNICAL INFRASTRUCTURE

- Connection to the Internet both by optical network (symmetrical line 1Gbps/1Gbps) and by radio (symmetrical line min. 200Mbps/200Mbps)

PROPERTY

Private

1ST CLASS ROAD OR MOTORWAY WITHIN 10 KM

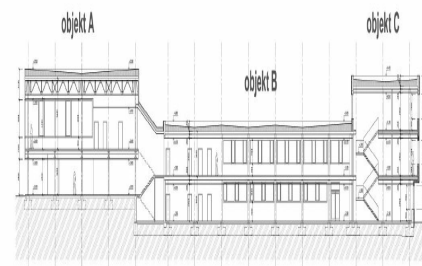
Yes

RAILWAYS WITHIN 10 KM

Yes

AIRPORT WITHIN 50 KM

Yes



Brief description

Offer of commercial space in the newly renovated building LT CUBE 2 (year 2022) in Ostrava - Poruba. The L-shaped building comprises 3 interconnected buildings A, B and C and reaches a floor area of more than 3,000 m². The building offers flexible use options and variable space layout - office units from 52m² (minimum), floor area 464 - 623 m². Possibility of renting including office equipment according to the tenant's requirements (long-term lease). Parking on the premises is provided along the buildings (behind a security barrier), in garages or in nearby free parking lots. The indicative rental price is 2.900 - 3.500 CZK/m²/year + services (according to the required standard of offices, space, etc.).