

locality information

TYPE

Brownfields

PLACE

Rýmařov

AREA AVAILABLE

900 m²

PROPERTY

public - municipality

TYPE OF BROWNFIELD

building

NUMBER OF OBJECTS

1

BUILT UP AREA

274

CONTAMINATION

assumed uncontaminated

FORMER USE

civic amenities and housing

NETWORKING

complete

1ST CLASS ROAD OR MOTORWAY WITHIN 10 KM

Yes

RAILWAYS WITHIN 10 KM

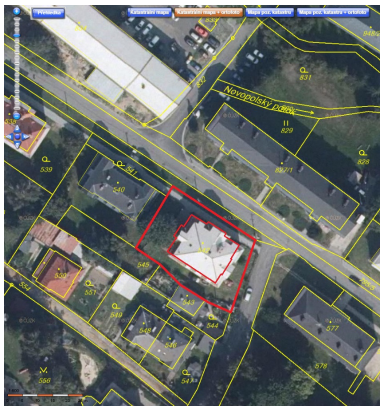
Yes

AIRPORT WITHIN 50 KM

No

TYPE OF USE

residential development (apartments)



Brief description

A 3-floor building with cellar spaces – a former creche that was last used as a replacement building for a leisure centre. Adjoining a small garden. In well-preserved condition.