

## locality information

### TYPE

Brownfields

### PLACE

Ostrava

### AREA AVAILABLE

3 600 m<sup>2</sup>

### PROPERTY

private

### TYPE OF BROWNFIELD

site

### CONTAMINATION

confirmed by SEKM database

### FORMER USE

industry

### NETWORKING

partial

### 1ST CLASS ROAD OR MOTORWAY WITHIN 10 KM

Yes

### RAILWAYS WITHIN 10 KM

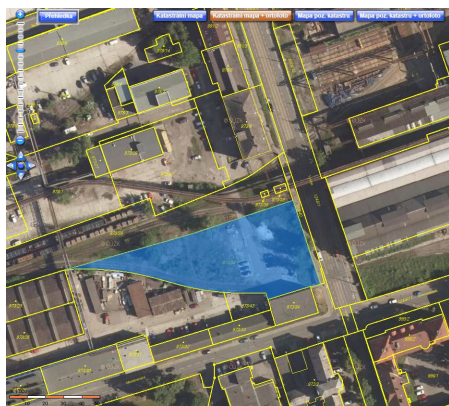
Yes

### AIRPORT WITHIN 50 KM

Yes

### TYPE OF USE

light industry



## Brief description

The site is temporarily used for storage and as a parking area. It is triangular in shape, bounded by the railway line and a fence. Adjacent to the site are buildings of the Stamont company.