

## locality information

### TYPE

Brownfields

### PLACE

Orlová

### AREA AVAILABLE

900 m<sup>2</sup>

### PROPERTY

public - municipality

### TYPE OF BROWNFIELD

complex

### NUMBER OF OBJECTS

1

### BUILT UP AREA

524

### CONTAMINATION

assumed uncontaminated

### FORMER USE

civic amenities

### NETWORKING

partial

### 1ST CLASS ROAD OR MOTORWAY WITHIN 10 KM

Yes

### RAILWAYS WITHIN 10 KM

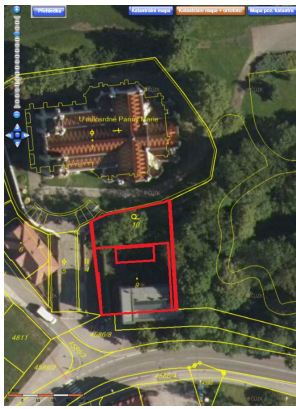
Yes

### AIRPORT WITHIN 50 KM

Yes

### TYPE OF USE

civic amenities



## Brief description

A building (incl. facilities) dating from 1928. A free-standing building with mainly office space; premises of a cake shop on the 1st floor. Brick building with a flat roof.