

## locality information

### TYPE

Brownfields

### PLACE

Město Albrechtice

### AREA AVAILABLE

1 100 m<sup>2</sup>

### PROPERTY

private

### TYPE OF BROWNFIELD

building

### NUMBER OF OBJECTS

1

### BUILT UP AREA

338

### CONTAMINATION

assumed uncontaminated

### FORMER USE

civic amenities and housing

### NETWORKING

complete

### 1ST CLASS ROAD OR MOTORWAY WITHIN 10 KM

Yes

### RAILWAYS WITHIN 10 KM

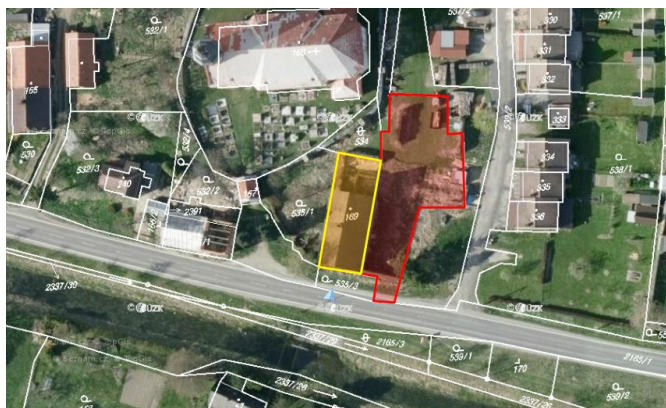
Yes

### AIRPORT WITHIN 50 KM

No

### TYPE OF USE

mixed-use rural residential development



## Brief description

A 2-floor former rectory from the 18th century, in the close vicinity of the church. Listed as a cultural monument. The building has 10 rooms on 3 levels. The adjoining farm complex includes remnants of farm buildings, a perimeter wall with a summerhouse, and a brick gateway with access for vehicles and a gate for pedestrians. The building is next to the road, near a church/cemetery. It is in poor condition and requires complete reconstruction. A small garden adjoins it. Offered for sale/rent.