



SPAS

IN THE MORAVIAN-SILESIA REGION

Number of spa patients
in the MSR during 2019

29 600

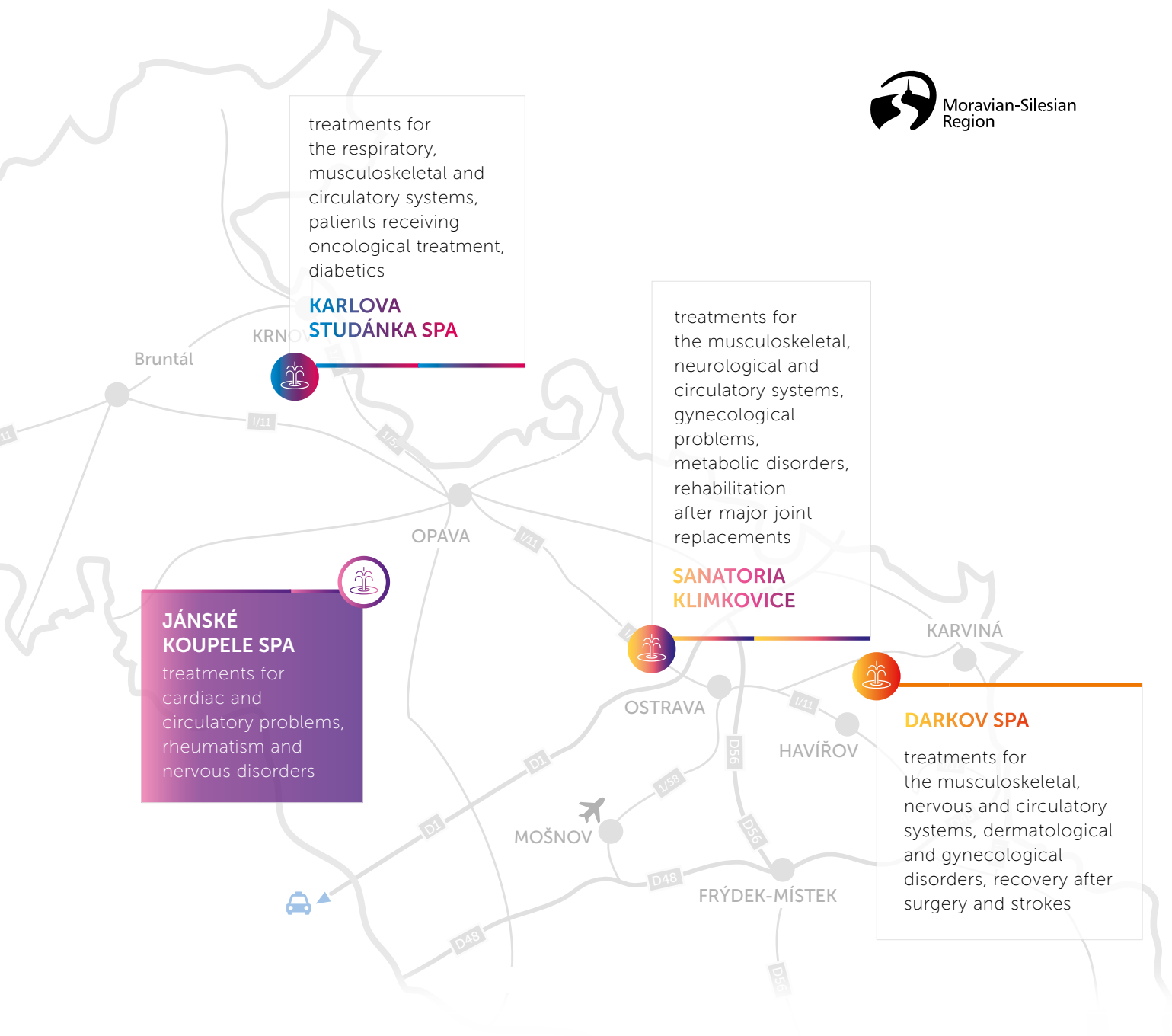
of which:

international clients

1 400

clients from
the Czech Republic

28 200



Number of overnight stays

543 000

Average length of stay for international clients

28,4 days

Average length of stay for Czech clients

18,9 days

International clients' most frequent country of origin

Saudi Arabia, Israel, Russia

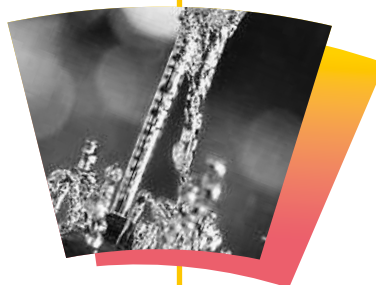


JÁNSKÉ KOUPELE SPA HISTORY

Jánské Koupele can boast a long tradition as a spa resort. The first documented mention of healing springs in the area dates back to 1640, but people probably used the springs for a long time before that. It is not known in which precise year the spa resort was established. Jánské Koupele enjoyed its peak of popularity in the 19th and early 20th centuries, when it ranked among the most important spa resorts in Silesia. It owes its renown mainly to the high-quality iron-rich mineral water, as well as its beautiful location in the middle of the Jeseníky forests.

The mineral water from the local springs is rich in iron and carbon dioxide. The total current capacity of the springs is 30 000 litres of mineral water per day; at the spa's peak, around 50 000 bottles of mineral water were filled from the springs every year. After the Second World War the complex was used as a rehabilitation and recreation centre. Jánské Koupele is an ideal location for treatment of cardiac and circulatory problems, rheumatism and nervous disorders.

SPRINGS



Jan
the first spring systematically used at the Jánské Koupele resort (from 1812). The water was used for spa treatments.



Pavel
contains 18 types of minerals and is very rich in iron and free carbon dioxide.



Marie
mineral water from this spring is rich in magnesium and calcium salts and is slightly radioactive.



Forest spring
currently not used.

JÁNSKÉ KOUPELE SPA

DESCRIPTION AND CURRENT SITUATION

The Jánské Koupele spa complex is situated in the forests of the Low Jeseníky mountains, in the municipality of Staré Těchanovice, approx. 60 km from the regional capitals Ostrava and Olomouc and 30 km from the city of Opava.

Nearby is the Kružberk reservoir, and the Moravice River flows through the area. The location of the spa complex offers an excellent climate and beautiful natural surroundings. It holds unique potential for recreation and relaxation. Essential infrastructure exists in the vicinity. In the summer the area is very popular with cyclists and water sports enthusiasts, and in the winter it is close to several ski resorts. The Jánské Koupele complex is currently in private ownership. It is disused, and has

become derelict. In 2005 the entire complex was listed as a cultural monument. In 2013 the scope of this legal protection was narrowed; now it applies only to several buildings at the site. The total area of the complex and adjoining land is approx. 8 ha. The zoning plan does not place any restrictions on the future development of the location. It is in the interests of both the municipality and the Region to revive the spa tradition at Jánské Koupele.

SITE DESCRIPTION

Area available: 8 ha

Distance to Leoš Janáček Airport: 50 km

Distance to railway: 8 km

Distance to D1 motorway: D1 (30 km)

TECHNICAL INFRASTRUCTURE

The site is connected to the local water mains network

Above-ground power line (VN 22 KV)

No gas main, no sewerage

POSSIBLE FUTURE USES

Spa - Wellness - Sports - Relaxation - Restaurant

LEISURE OPTIONS IN THE VICINITY

Water sports - Activities for families with children

Nature trails - Fishing - Mountain hiking

Slate heritage region - Culture



JÁNSKÉ KOUPELE SPA

THE FUTURE

The municipality of Staré Těchanovice and the Moravian-Silesian Region are keen to ensure that the location undergoes development in order to revive it as a recreational destination. The zoning plan does not place any restrictions on the future development of the location. The Jánské Koupele complex offers excellent potential for reviving the local tradition of spa treatments and creating a broad range of leisure activities.



Relax

Sports



Spa



Restaurant

CONTACT

Patrik Hronek
Head of Investment
+420 602 712 225, hronек@msid.cz
Moravian-Silesian Investment and Development